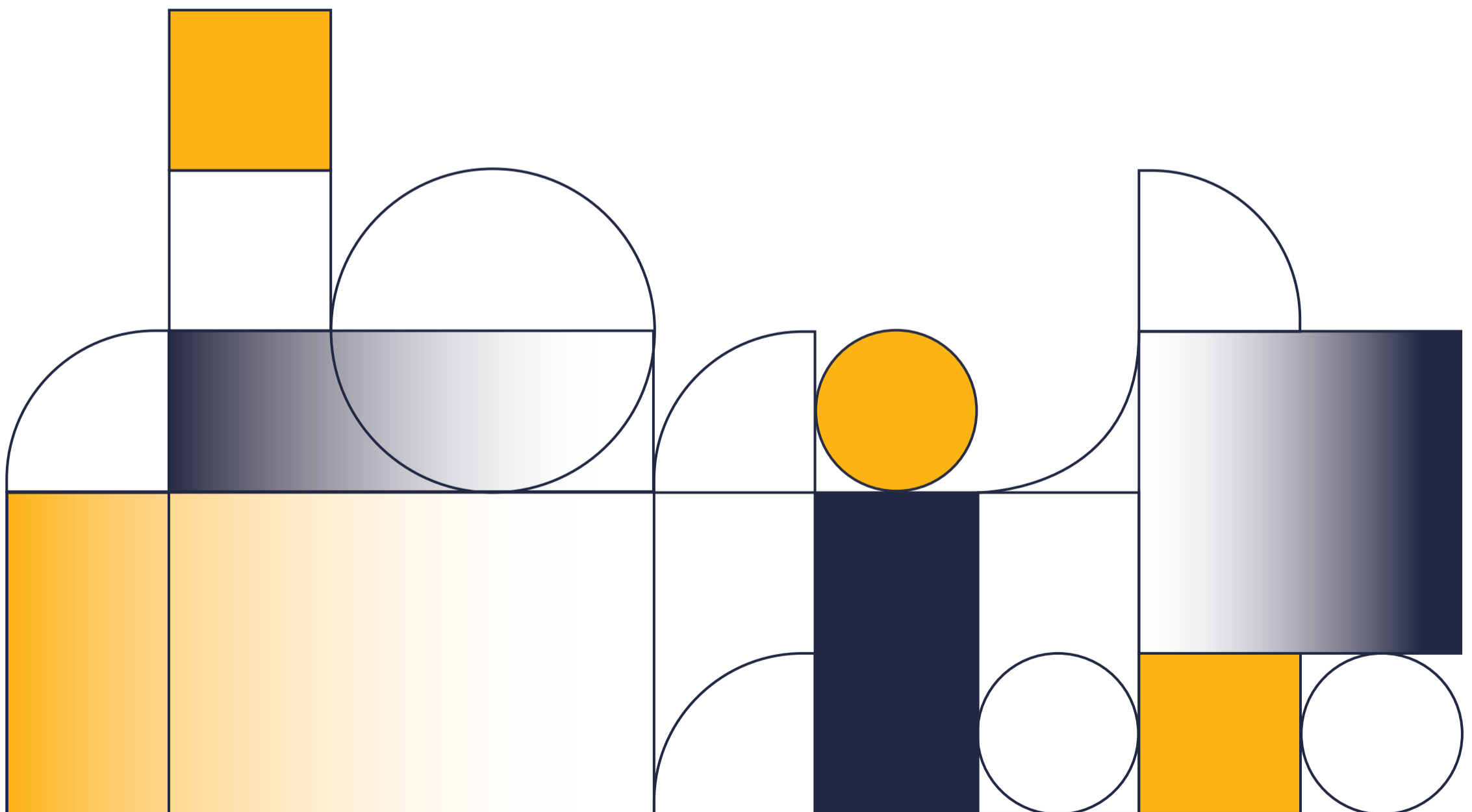




Empower. Build. Evolve.



# OUR EXPERTISE

Our approach is founded in creating change from your most important resource: people. We provide a way to form the conversation, improve the process and execute the vision.

## OUR MISSION

Our mission is to help owners in highly-regulated industries to maximize their infrastructure and portfolios and remove silos between facilities and construction.

We help you by providing a path; an industry-driven and structured approach to transformation that focuses on people, strategy, process and technology.

**Empower:** People need to see how their own roles and goals influence the wider team to truly embrace organizational change. We want to help a team to pull together in the same direction.

**Build:** Organizations need a structured and tested way to begin the roadmap. Our methodology means good business process is created with digitization and adoption in mind. We also bring pre-built solutions and our toolshed to get you there faster.

**Evolve:** To keep adding value, we need to keep doing better. Bringing a mindset of continuous improvement means planning for the future.

## THE BENEFITS BY THE NUMBERS

### 38% More Productivity

- Highly engaged employees are 38% more likely to have above average productivity.
- Productivity naturally increases a business's profits and customer satisfaction.

(WORKPLACE RESEARCH FOUNDATION 2014)

### 90% Potential Cost Cuts

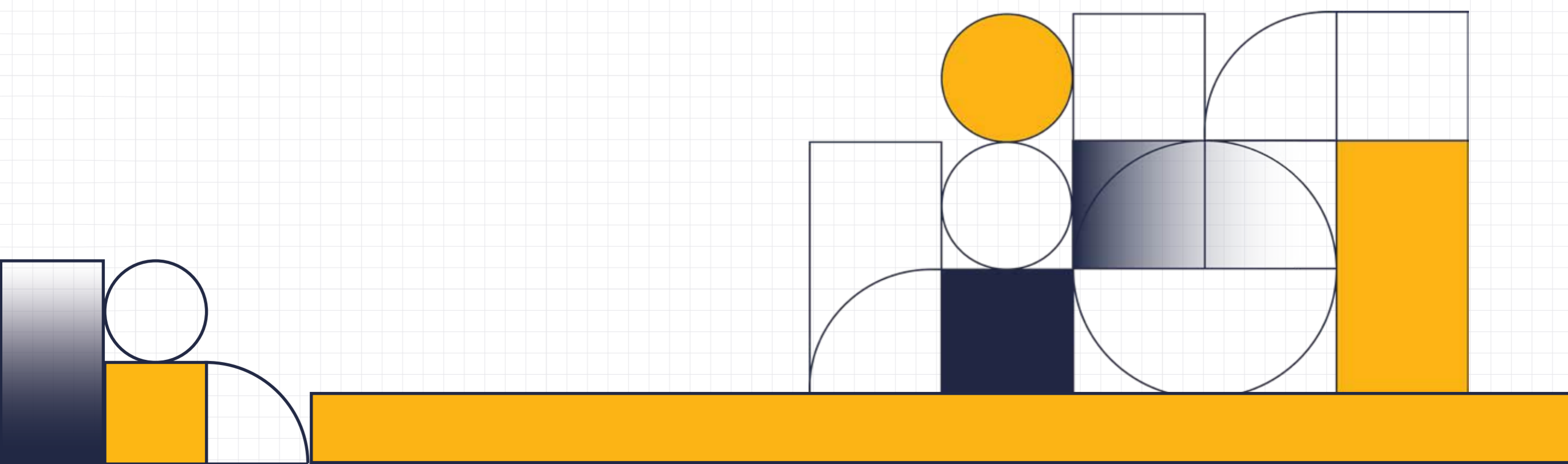
- By digitizing information-intensive processes, costs can be cut by up to 90% and turnaround times improved by several orders of magnitude.
- Processes that are transformed into tools are more likely to be followed and adopted.

(MCKINSEY 2014)

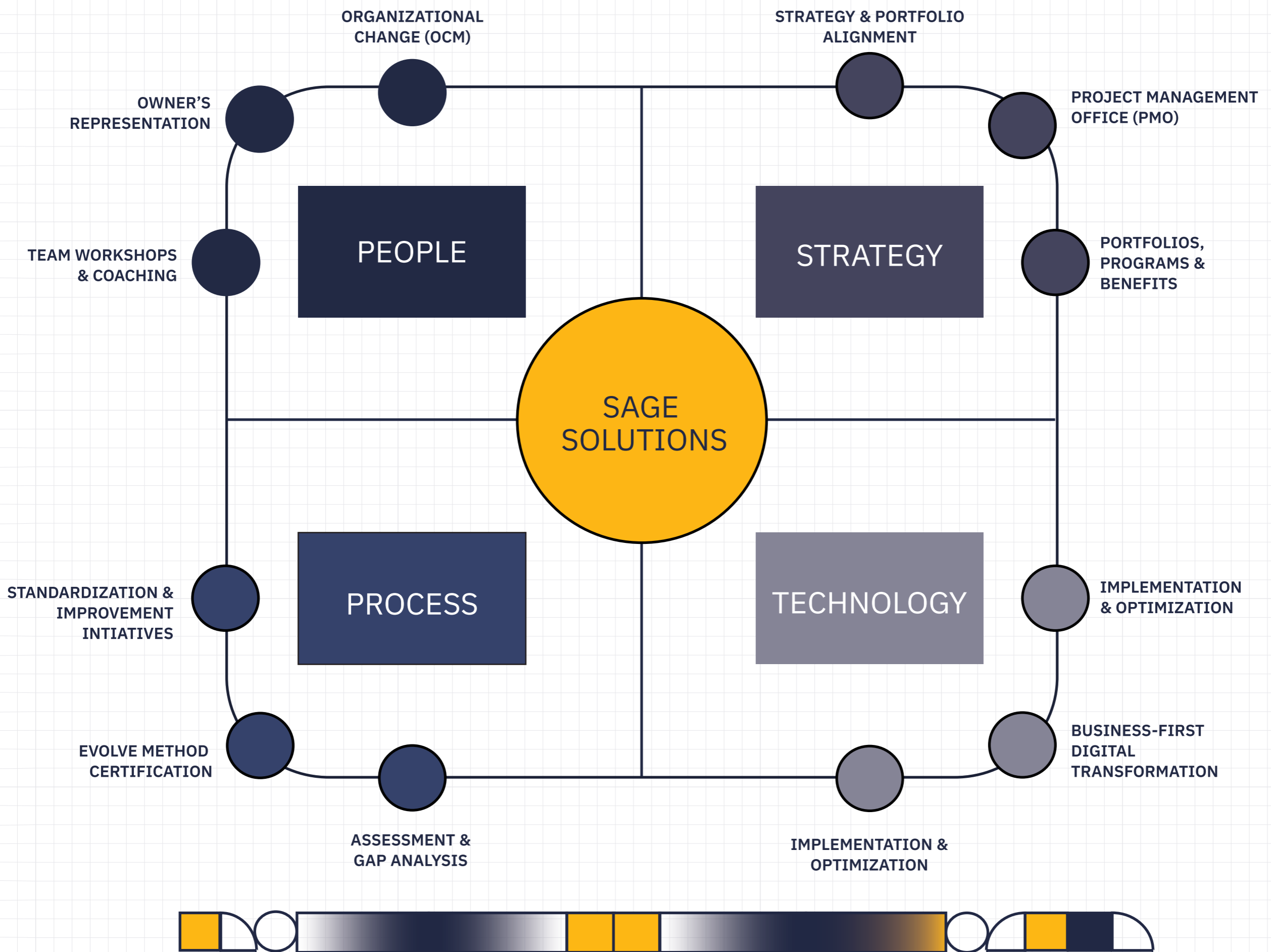
### 28% Executive Support Challenges

- Only 28% of companies see support from their executives in business process improvement.
- This statistic is what challenges us to never stop our mission to evolve the industry until we are unnecessary.

(BPTOOLS 2016)



# MAXIMIZING INFRASTRUCTURE, ASSET AND PORTFOLIO STRATEGY THROUGH BUSINESS-FIRST TRANSFORMATION.



We've been in the facilities and construction industry; in the trailers and on the job sites. We've seen project success and failure and our mission was born on how we could increase success through a prescriptive approach.

Unlike traditional consulting, we feel our job is to supplement your team in new endeavors much like training wheels – guiding, supporting, and advising with the full acknowledgment transformation comes from within your own organization. We are aware of the transition in the beginning and plan for it, engaging and educating your people to continue the work after we complete the project.

We also want to challenge ourselves by always bringing back new value to you.

“You have to design the tool around the process, not the process around the tool.”



*Cari Stieglitz, President*

Sage was formed as a women-led business in 2015 and focused on diversity of talent. Diana Kennedy and Cari Stieglitz founded the company out of a vision for helping the industry to do better and add value directly to clients. Our team brings a boutique approach to the Campos family. We focus intensively and exclusively on strategic problem solving.




To date, our organization has embraced that growth and formed new service lines around innovating and expanding, now enabled to reach into the Campos group of companies for enhanced and full lifecycle services.

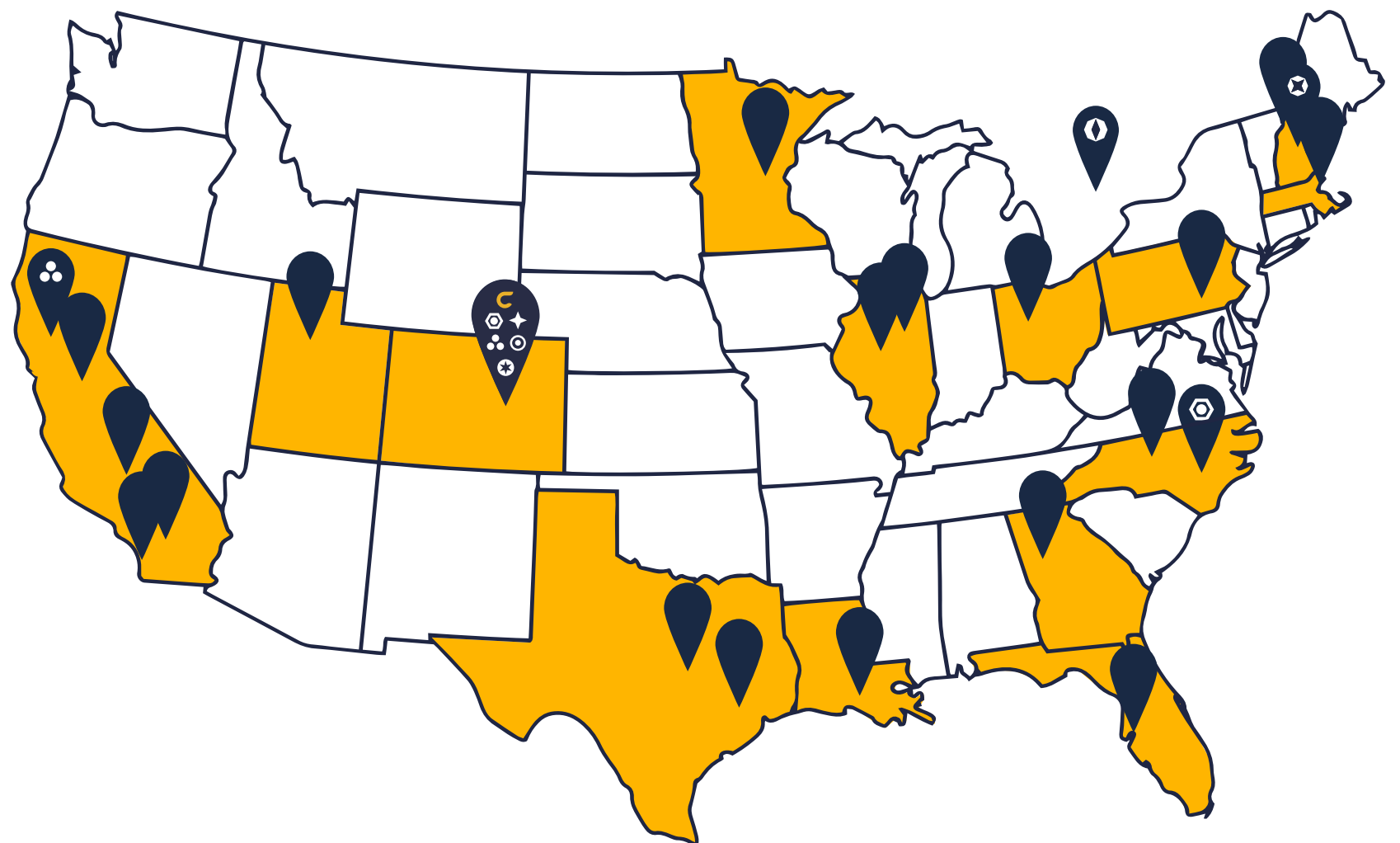


By considering our impact on the community and the environment, we uplift the future of both. Through outreach, we support STEM education initiatives that create opportunities for under-served and female students.



Headquarters

-  Campos
-  Co-Locations
-  Campos EPC
-  Campos CVG Staffing Solutions
-  Campos Novitech
-  Campos NACC Construction
-  Campos Fabrication
-  Campos Sage
-  Campos Precision



Learn more at [campos-sage.com](https://campos-sage.com)

A MEMBER OF THE CAMPOS FAMILY



[camposcompanies.com](https://camposcompanies.com)